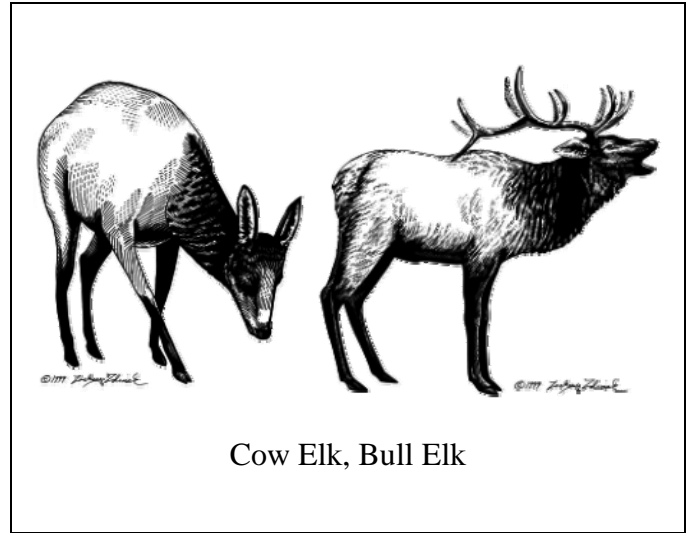
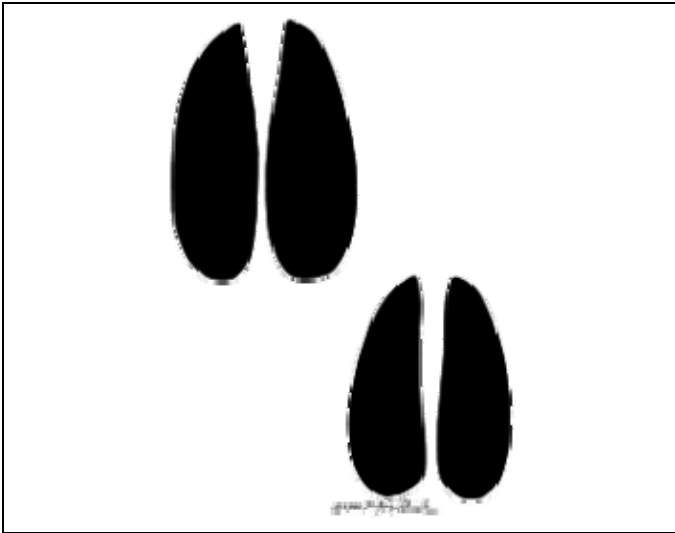
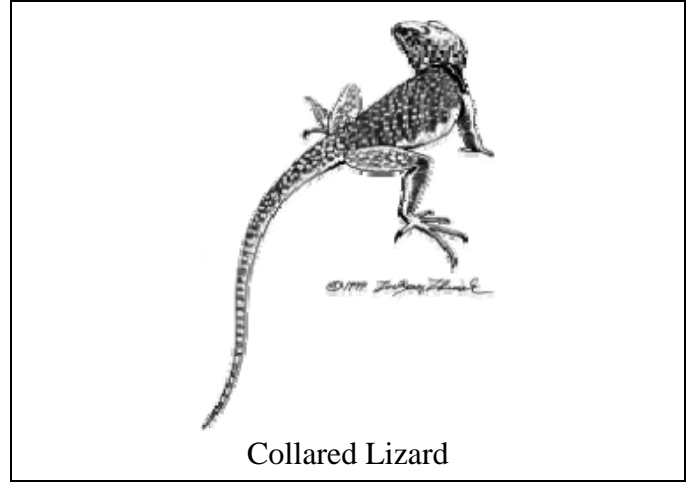




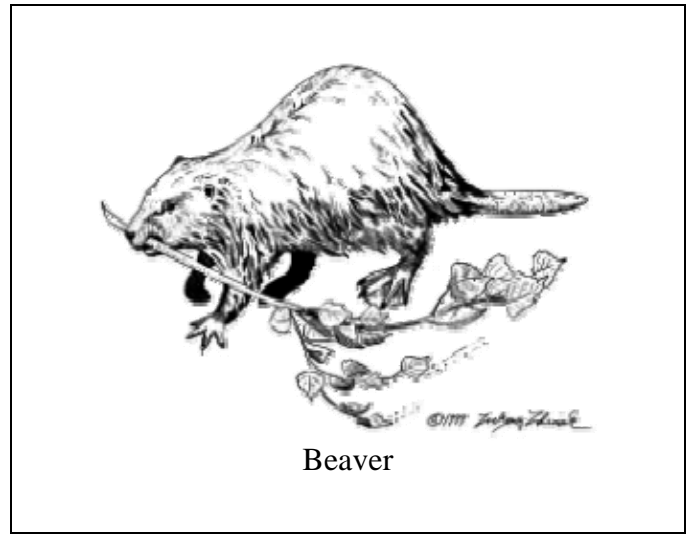
Collared Lizard



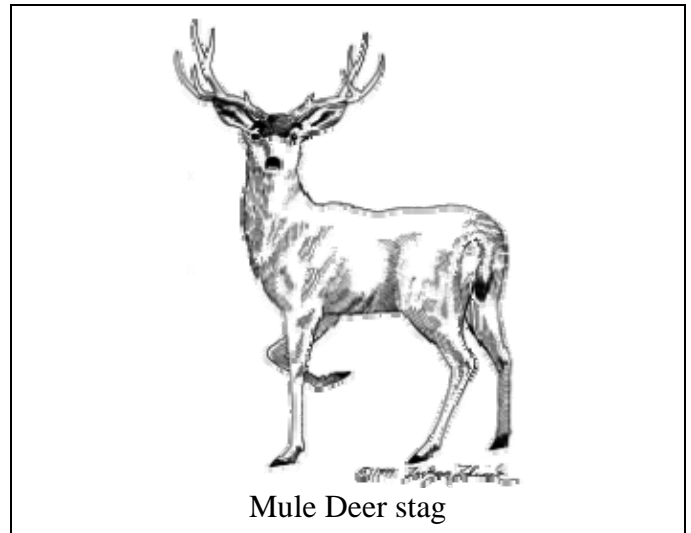
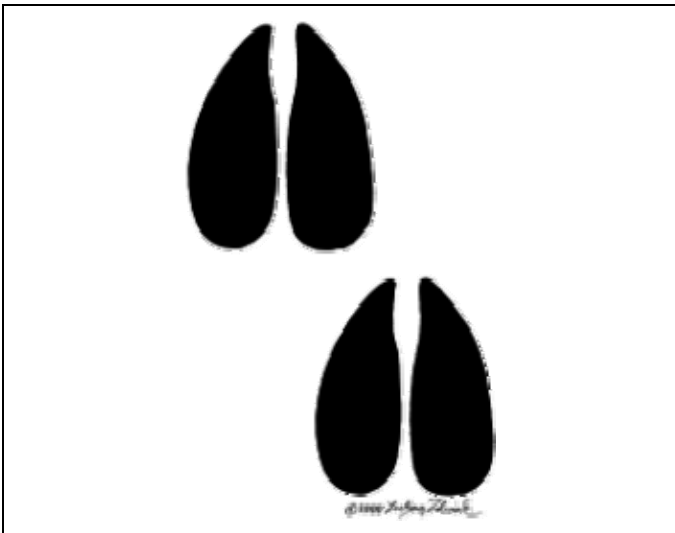
Cow Elk, Bull Elk



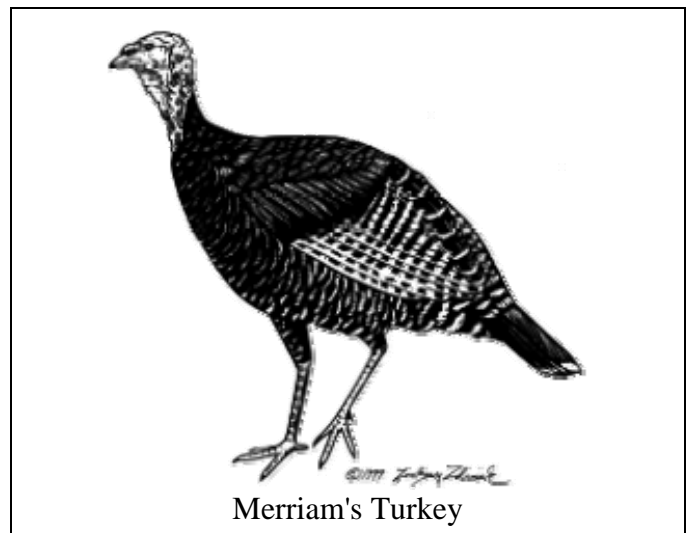
Gunnison's Prairie Dog



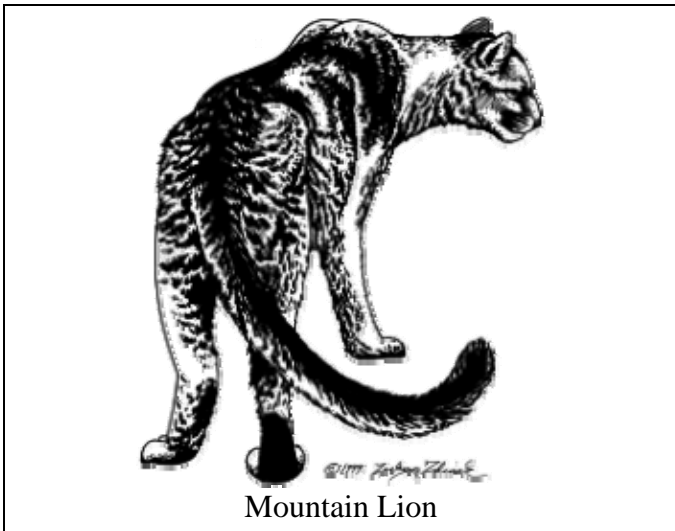
Beaver



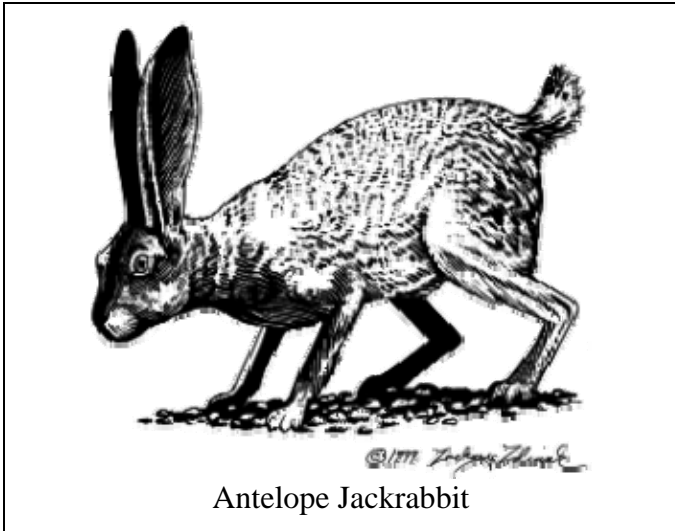
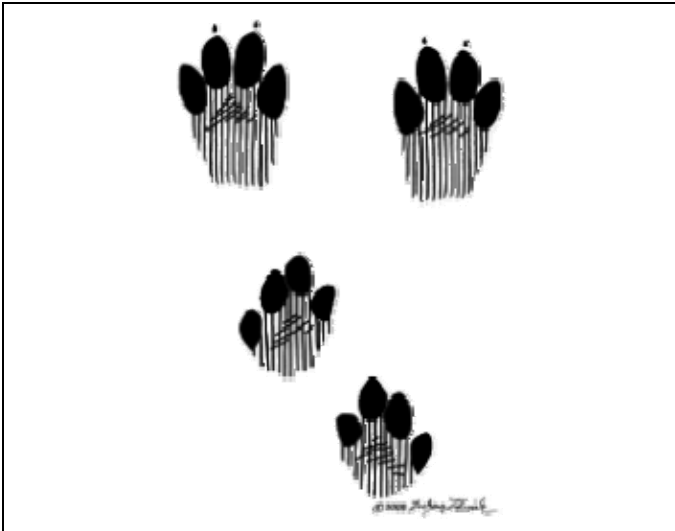
Mule Deer stag



Merriam's Turkey



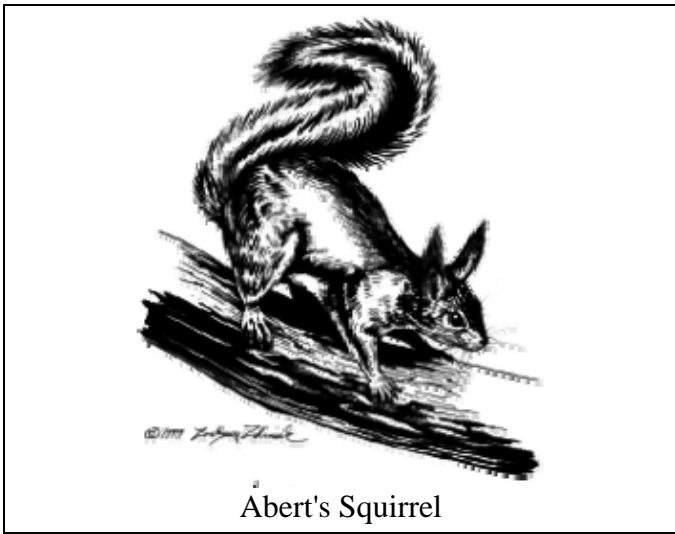
Mountain Lion



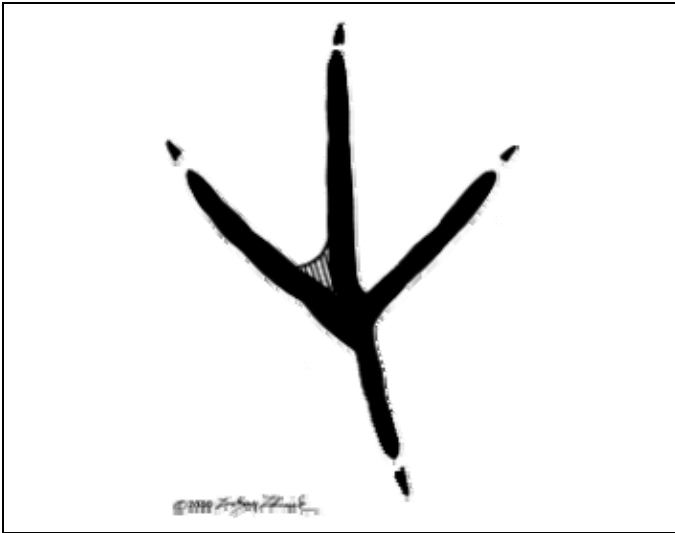
Antelope Jackrabbit



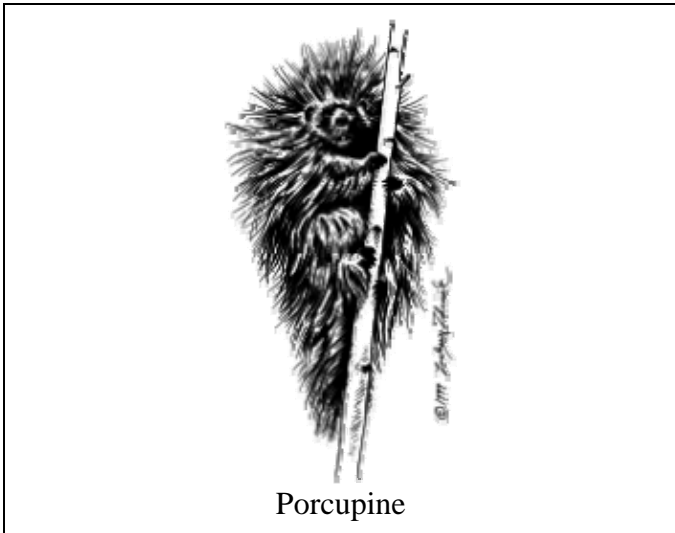
Gray-collared Chipmunk



Abert's Squirrel



Great Blue Heron



Porcupine



To make flash cards print out this document single sided on heavy paper, then reload the paper into the printer opposite side up. Print page 1 again on the back of page 1, page 2 on the back of page 2... You will end up with two sets of flash cards, one for you and one for a friend.

The tracks game is provided by the USDA Forest Service, Rocky Mountain Research Station, Flagstaff Wildlife Research Unit. The game is available on-line at www.rmrs.nau.edu/wildlife/tracks/ All artwork is copyright Zackery Zdinak , Lifedraw.com, used with permission.

Nondiscrimination Notice: "The U.S. Department of Agriculture (USDA) prohibits discrimination in all its programs and activities on the basis of race, color, national origin, age, disability, and where applicable, sex, marital status, familial status, parental status, religion, sexual orientation, genetic information, political beliefs, reprisal, or because all or a part of an individual's income is derived from any public assistance program. (Not all prohibited bases apply to all programs.) Persons with disabilities who require alternative means for communication of program information (Braille, large print, audiotope, etc.) should contact USDA's TARGET Center at (202) 720-2600 (voice and TDD). To file a complaint of discrimination write to USDA, Director, Office of Civil Rights, 1400 Independence Avenue, S.W., Washington, D.C. 20250-9410 or call (800) 795-3272 (voice) or (202) 720-6382 (TDD). USDA is an equal opportunity provider and employer."

